


An introduction to imaging of skull base lesions

April 2, 2019: Martin Mack, Munich/DE

Prof. Martin Mack

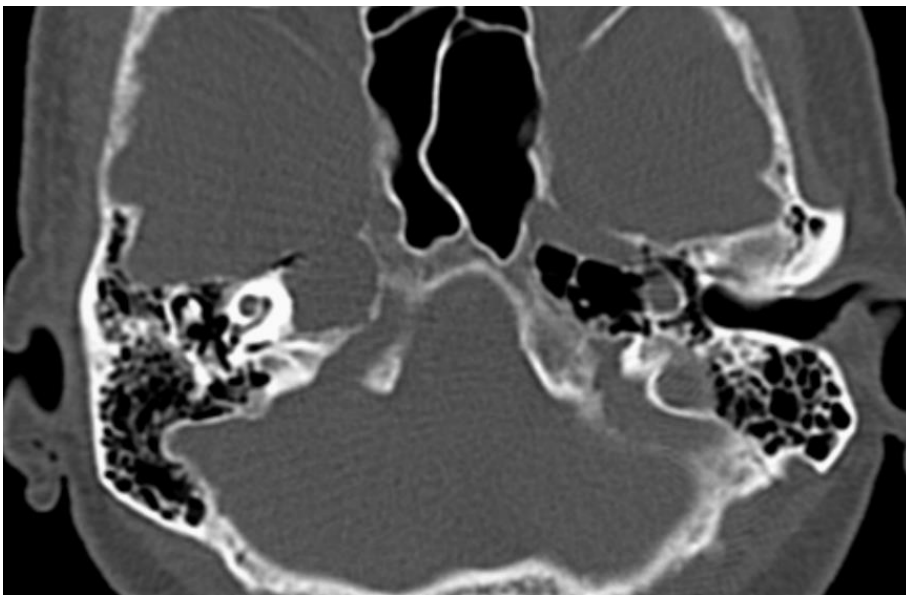
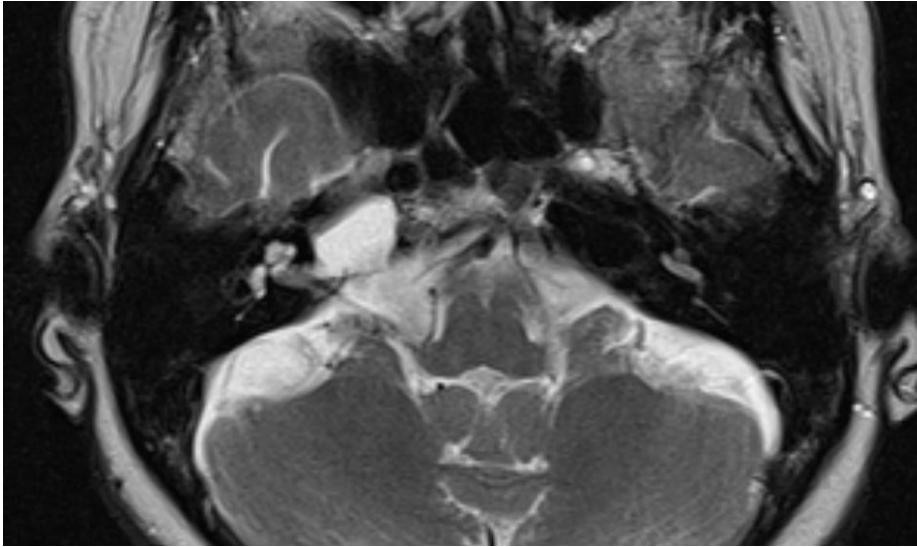
May 1989 - Sept 1992	Medical education at the University of Munich	
Oct. 1992 - March 1994	Medical education at the University of Berlin	
April 1994 - April 1995	University of Berlin, Virchow Hospital (Dept. of Radiology, Surgery, and Internal Medicine)	
May 1995 – Oct. 1998	Department of Radiology, Virchow Hospital, Humboldt University of Berlin	
since Nov. 1998	Department of Diagnostic and Interventional Radiology, Johann Wolfgang Goethe University, Frankfurt/Main	
since 2000	Senior faculty radiologist and Assistant Medical Director Department of Diagnostic and Interventional Radiology, Johann Wolfgang Goethe University, Frankfurt/Main	
2011-2014	President of the European Society of Head and Neck Radiology (ESHNR)	
Until March 2012	Professor and Deputy medical director: Department of Diagnostic and Interventional Radiology, Johann Wolfgang Goethe University, Frankfurt/Main	
Since April 2012	Radiologie München	

Learning Objectives

1. To become familiar with key anatomic structures of the skull base for a concise differential diagnosis 
2. To describe the pertinent imaging aspect of common and less common skull base masses, inflammatory and traumatic conditions
3. To learn how to distinguish benign from malignant lesions
4. To highlight imaging pitfalls and how to avoid misinterpretation

Teaser

What is the correct diagnosis?



- a. Primary skull base carcinoma
- b. Skull base metastases
- c. Cholesterol granuloma
- d. Asymmetric petrous apex pneumatization
- e. Glomus jugular tumor